

# the TEXTILE EYE

INSIGHTS FOR INSPIRED DESIGNERS

## SPRING REVIEW

*Maison et Objet & Paris Deco Off*

## TEXTILE MINDS

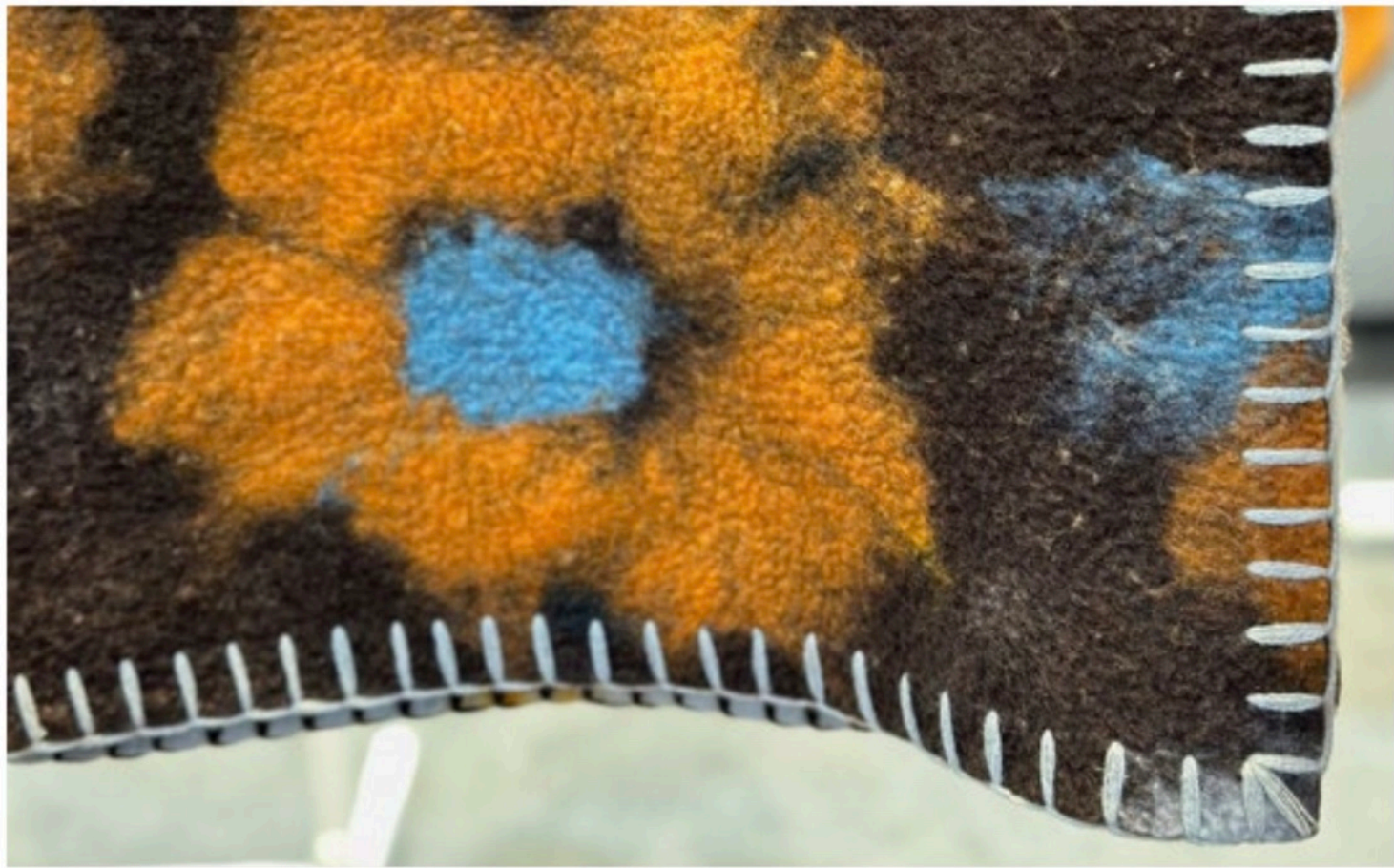
*The Creative Spark Behind the Collections*

*Plus*

## KIMONO

*Unfolding Hlstory at the Musée du Quai Branly*





Sandriver Cashmere Tibet

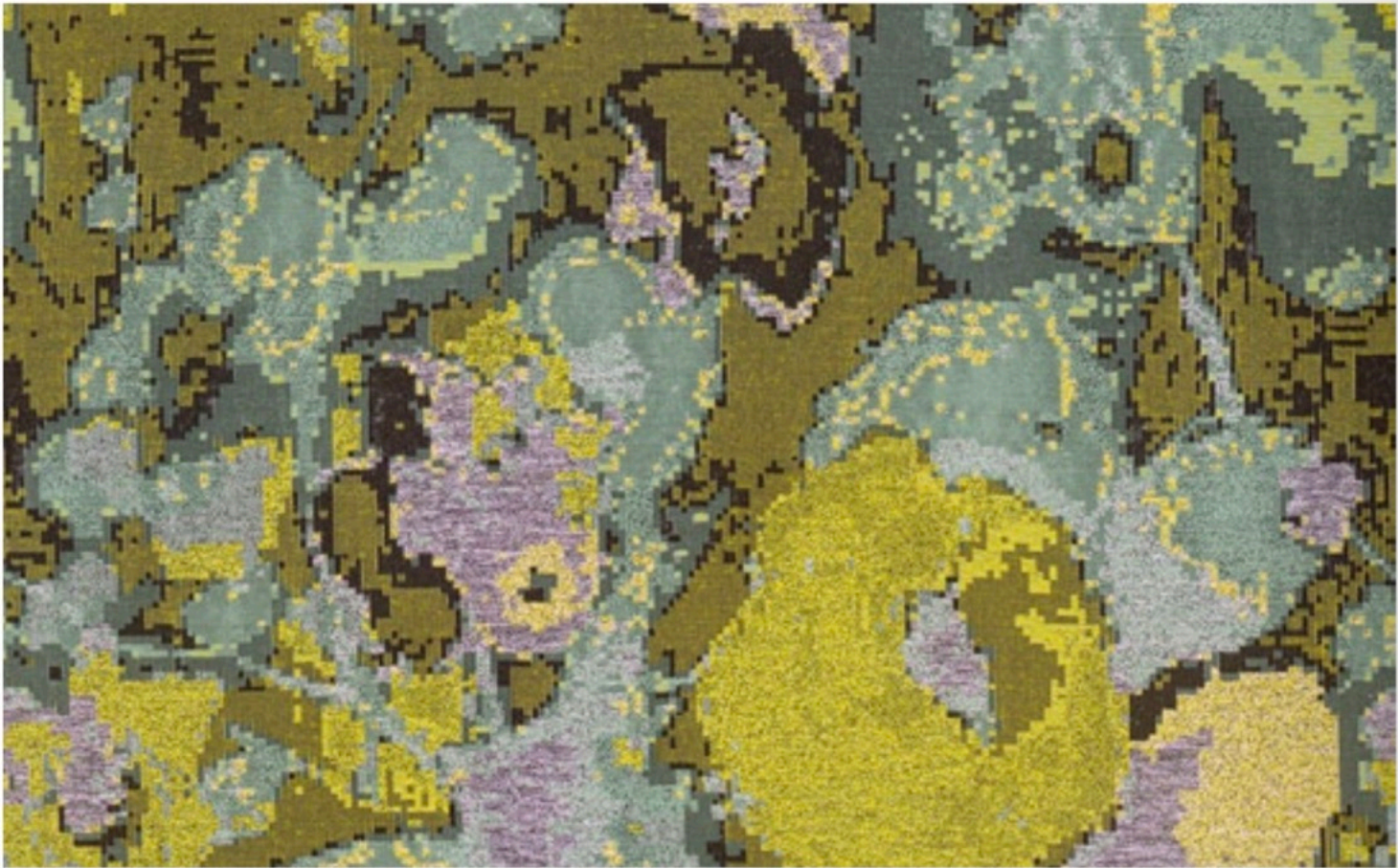


Rubelli

the TEXTILE EYE



Aur lie Mathigot at maison parisienne



Zimmer + Rohde





Omexco



Pierre Renart at maison parisienne

the TEXTILE EYE



Nobilis x Humbert & Poyet



Fabrice Juan Series for Studio by Tai Ping



*Theme*

# Go with the Ebb & Flow

Organic and unstructured, these designs celebrate unpredictable arrangements and keep the eye moving. Sometimes inspired by nature—from waves in the water to bark on a tree to cracks in a rock—these looks can bring the outdoors inside in a non-figurative way. Process-oriented approaches where layers of paint are scraped away to reveal organic pattern or pigment is dripped onto a surface can also lead to appealingly chaotic effects. Easy to use on curved surfaces and non-standard silhouettes, these maze-like designs possess a meditative and calming quality.

## LOOKS

Patterns evocative of natural surfaces & phenomena

Terrazzo & marbleized designs

Streaky brush strokes & spattered paint

Motifs with jagged or feathered edges

Meandering allover repeats

Moiré & undulating linework

Organically sculpted surfaces

Simone Pheulpin at maison parisienne







Simone Pheulpin at maison parisienne



Jallu Ébenistes



Sandra Jordan Prima Alpaca by ERDEN



Arte